

RENKO CHART MANUAL

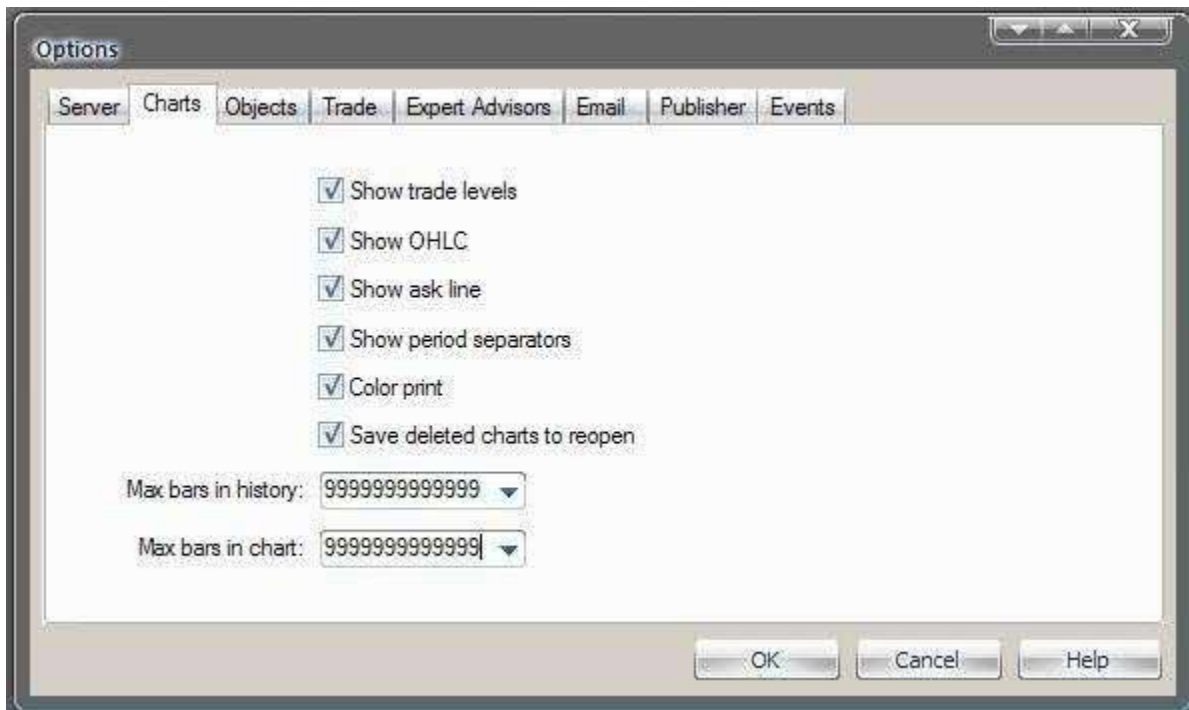
How to install Renko Chart

Step 1:

Click *Tools>Options*



Click Tab *Charts* and check all boxes, Insert 999999999999 to field *Max bars in history* and *Max bars in chart*.



Click Tab *Expert Advisors* and make sure to check all options like this picture below.



Then press *OK*

Step 2:

Close your MT4.

Extact file RenkoScalp_System.rar

Copy file Experts to folder (Extract file first)

C:\Program Files\Your MT4\experts

Copy file indicators to folder (Extract file first)

C:\Program Files\Your MT4\experts\indicators

Copy file ***RenkoScalpsystem.tpl*** to Folder :

C:\Program Files\Your MT4\templates

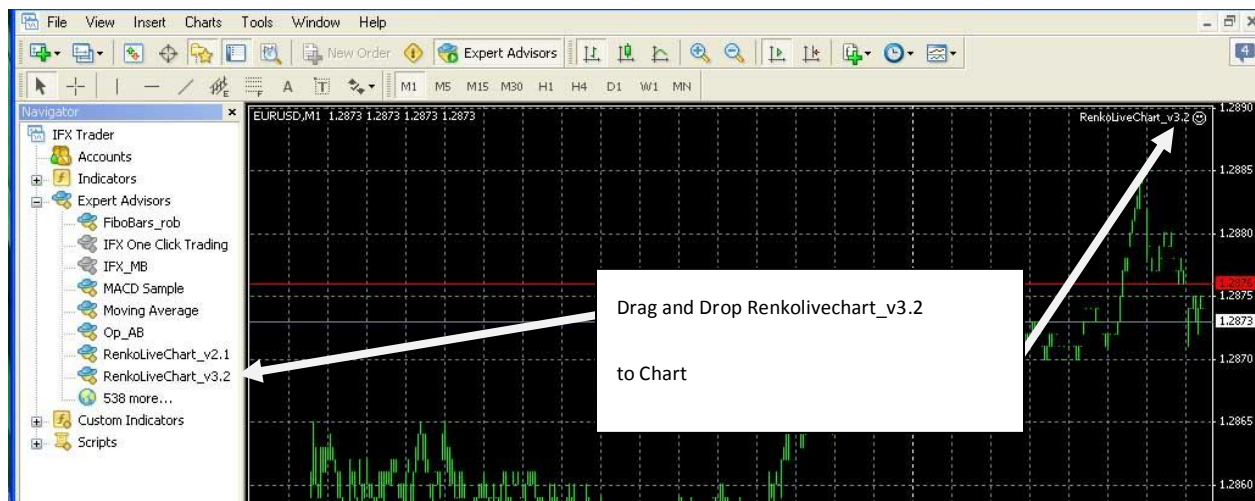
Step 3:

Open your MT4.

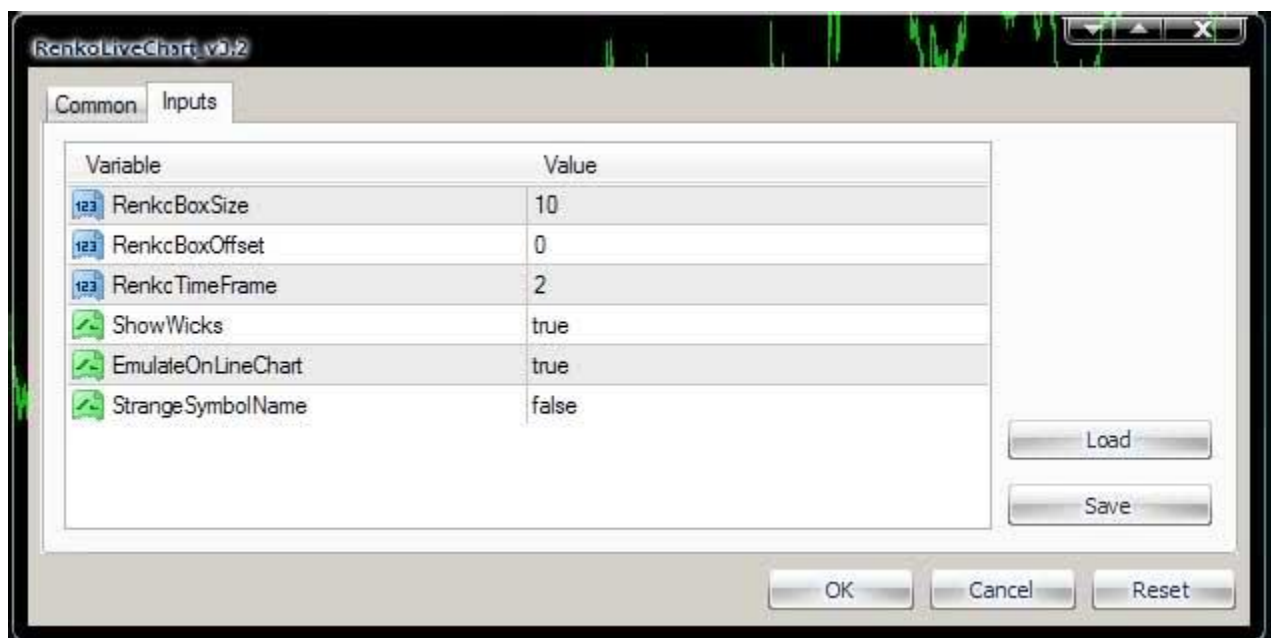
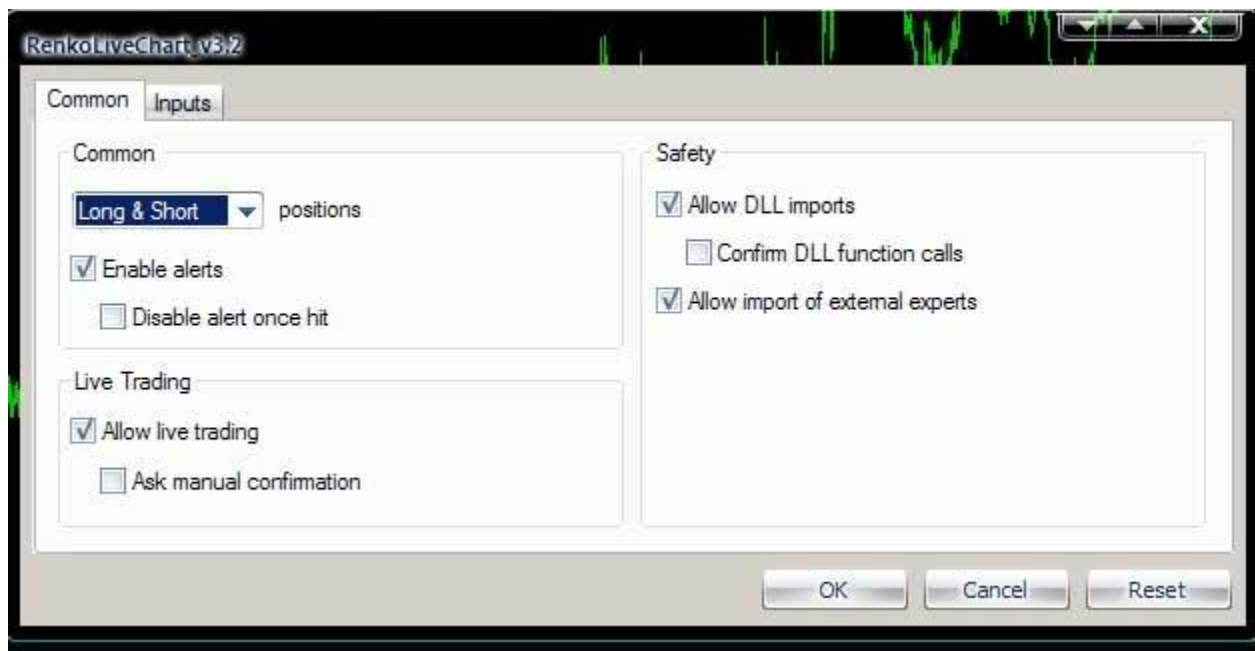
Then open chart time frame 1 minute,example: EUR/USD TF 1M.Zoom out to smallest chart then press HOME key on keyboard several times.We do this step to get history data minimum 1 to 2 month ago.

Step 4:

Click view,navigator



Now drag-drop RenkoLiveChart_v3.2 EA to chart TF 1M.



Note:

You can make choice about Renko BoxSize. But we recommend to you to use Boxsize 5 for Good result Scalping Mode.

Click OK and activated Expert Advisors such as this picture below:



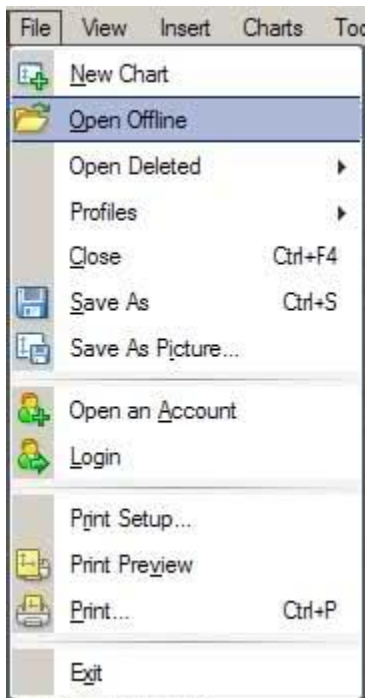
And now, Renko Chart is running to your MT4 and Price Data from chart TF1 have been ready to used by Renko Chart

Step 5

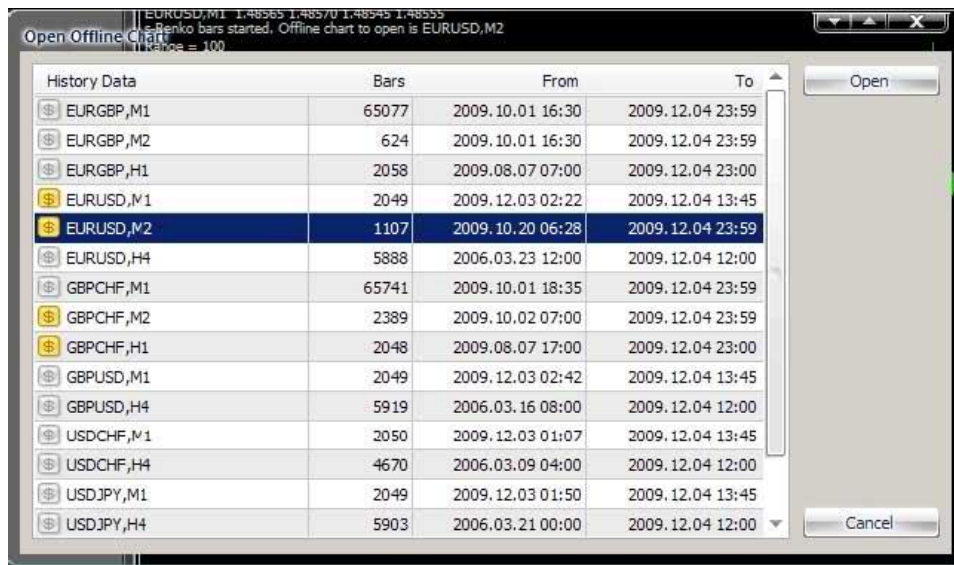
After EA Renko was installed to Chart TF M1, You can display the Renko chart .

Here the way:

Click *File>Open Offline*



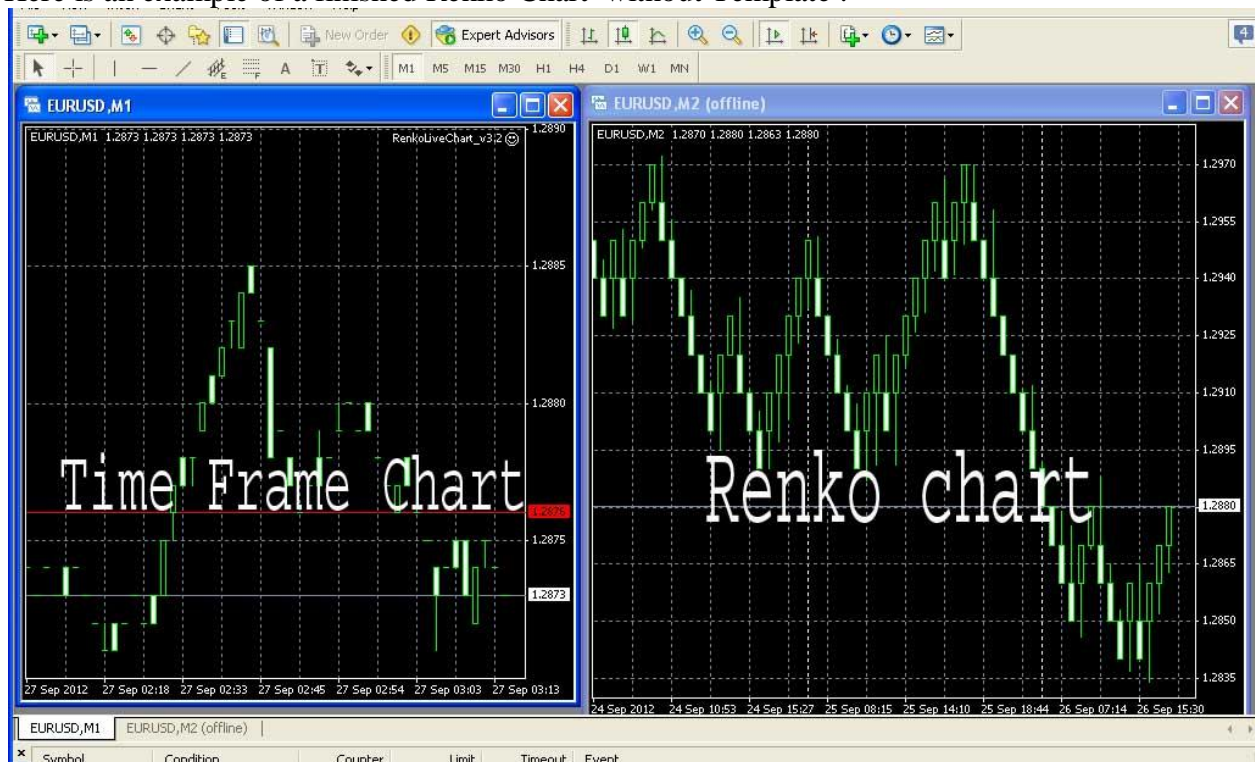
Find Chart Time Frame **M2** in the list and then Click **Open**.



Now Renko chart is displayed in the chart M2 (offline).

Keep in mind that in order to M2 Chart (offline) always update data from EA attached in the M1 Chart. You have to let M1 must go on (not to be closed), because the data rates of the M1 chart is used as a data feed to create M2 offline chart via EA

Here is an example of a finished Renko Chart without Template :



Step 6:

Attach Template

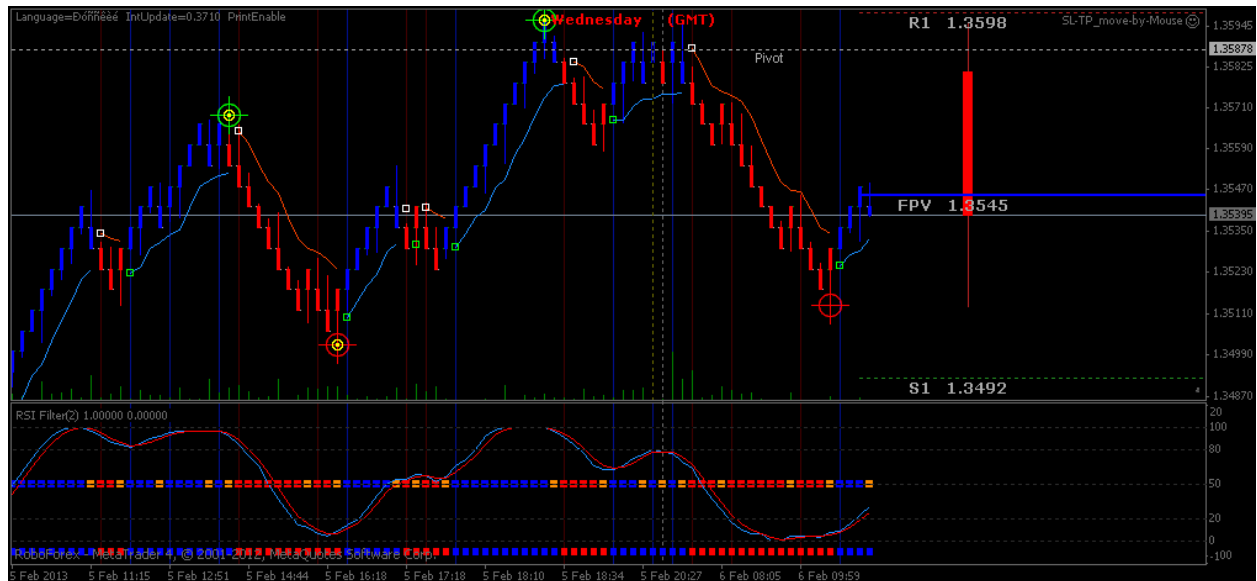
To show RenkoScalp_system on the chart,you have to attach template .

Just look at the picture below:



Click Template Tool,on the Top right Corner,select “ Renkoscalpsystem.tpl”,Click to display RenkoScalpsystem.

Here is the result :



Renko chart can not be installed when the market closed

-----RENKOSCALP SYSTEM-----